

**GENERAL LAND OFFICE**  
**PRIMER**  
**OF**  
**INSTRUCTIVE INFORMATION**  
**RELATIVE TO**  
**LEGAL SUBDIVISIONS AND PLATS**  
**OF**  
**PUBLIC LAND SURVEYS**

Prepared under direction of  
I.P. Berthrong  
Chief of Drafting Div.

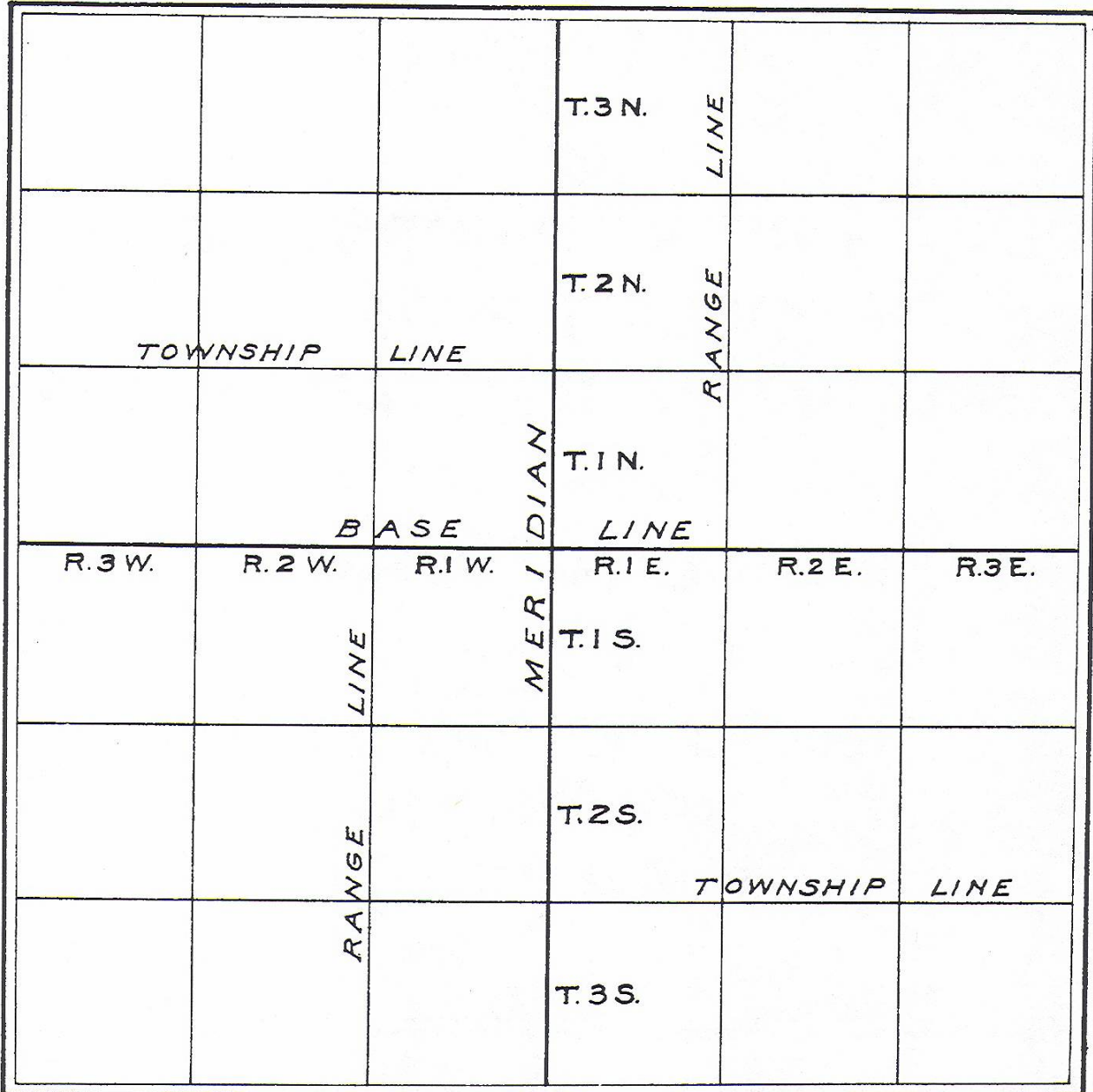
T.O.W.

*Publication Printed circa 1921*

Reproduced by the U.S. Department of the Interior, Bureau of Land Management,  
Eastern States

## METHOD OF NUMBERING TOWNSHIPS.

*North and South from Base Line and East and West from Meridian.*

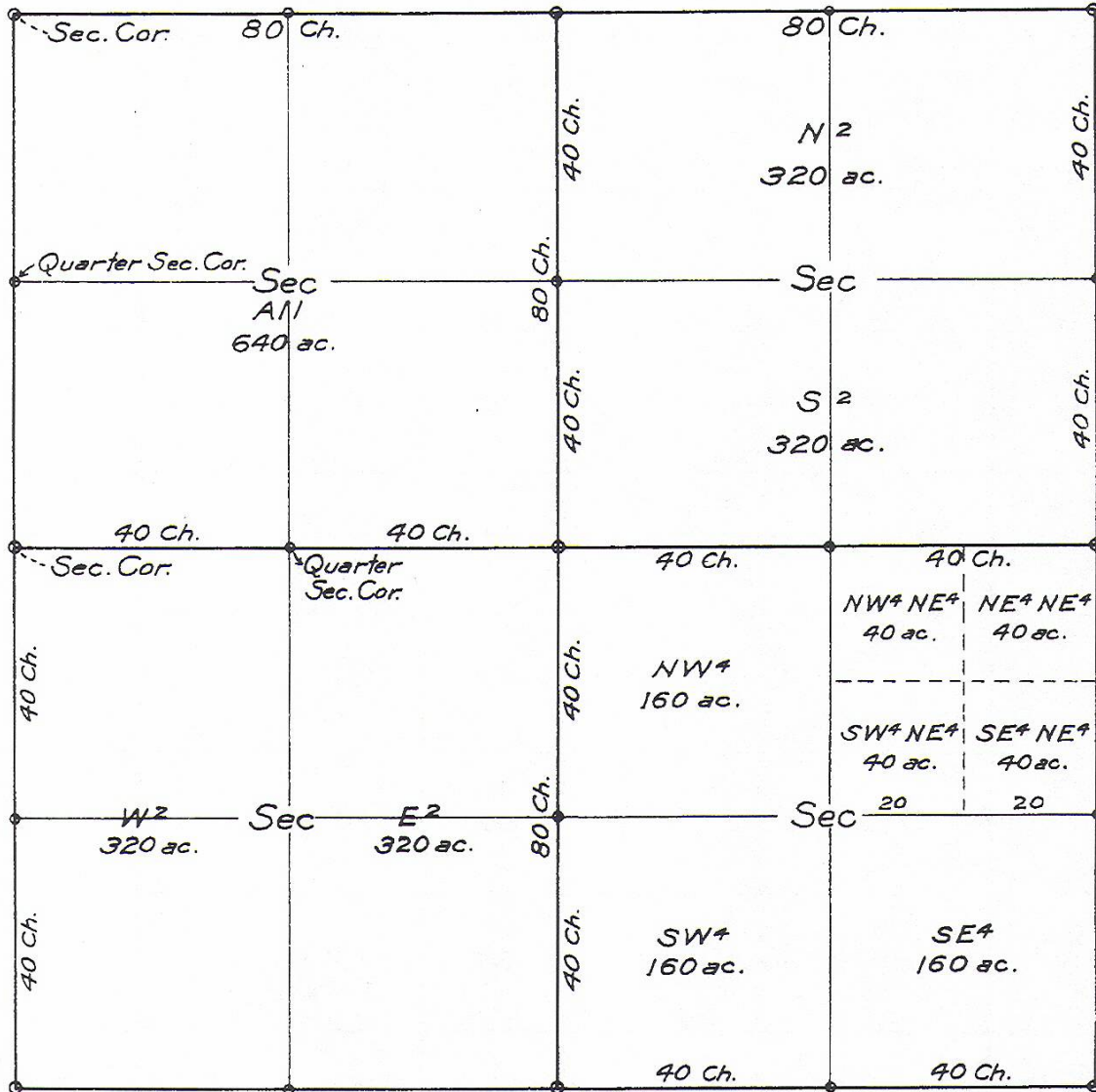


**THEORETICAL  
 TOWNSHIP DIAGRAM  
 SHOWING  
 METHOD OF NUMBERING SECTIONS  
 WITH ADJOINING SECTIONS**

36	31	32	33	34	35	36	31
80Ch.	6 Miles - 480 Chains					80Ch.	80Ch.
1	1 Mile					80Ch.	6
12	7	8	9	10	11	12	7
13	18	17	16	15	14	13	18
24	19	20	21	22	23	24	19
25	30	29	28	27	26	25	30
36	31	32	33	34	35	36	31
1	6	5	4	3	2	1	6

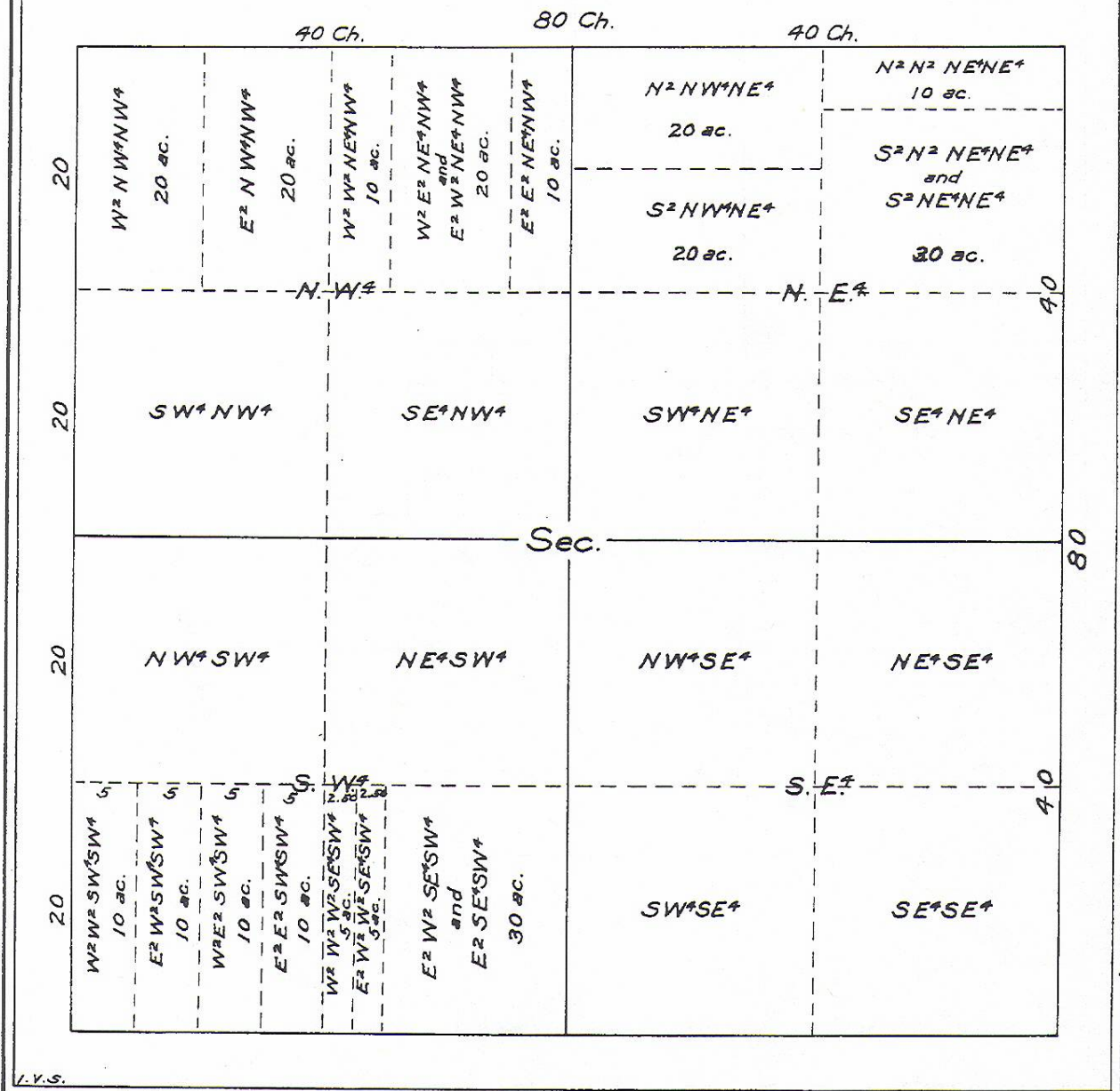


# LEGAL SUBDIVISIONS OF SECTION

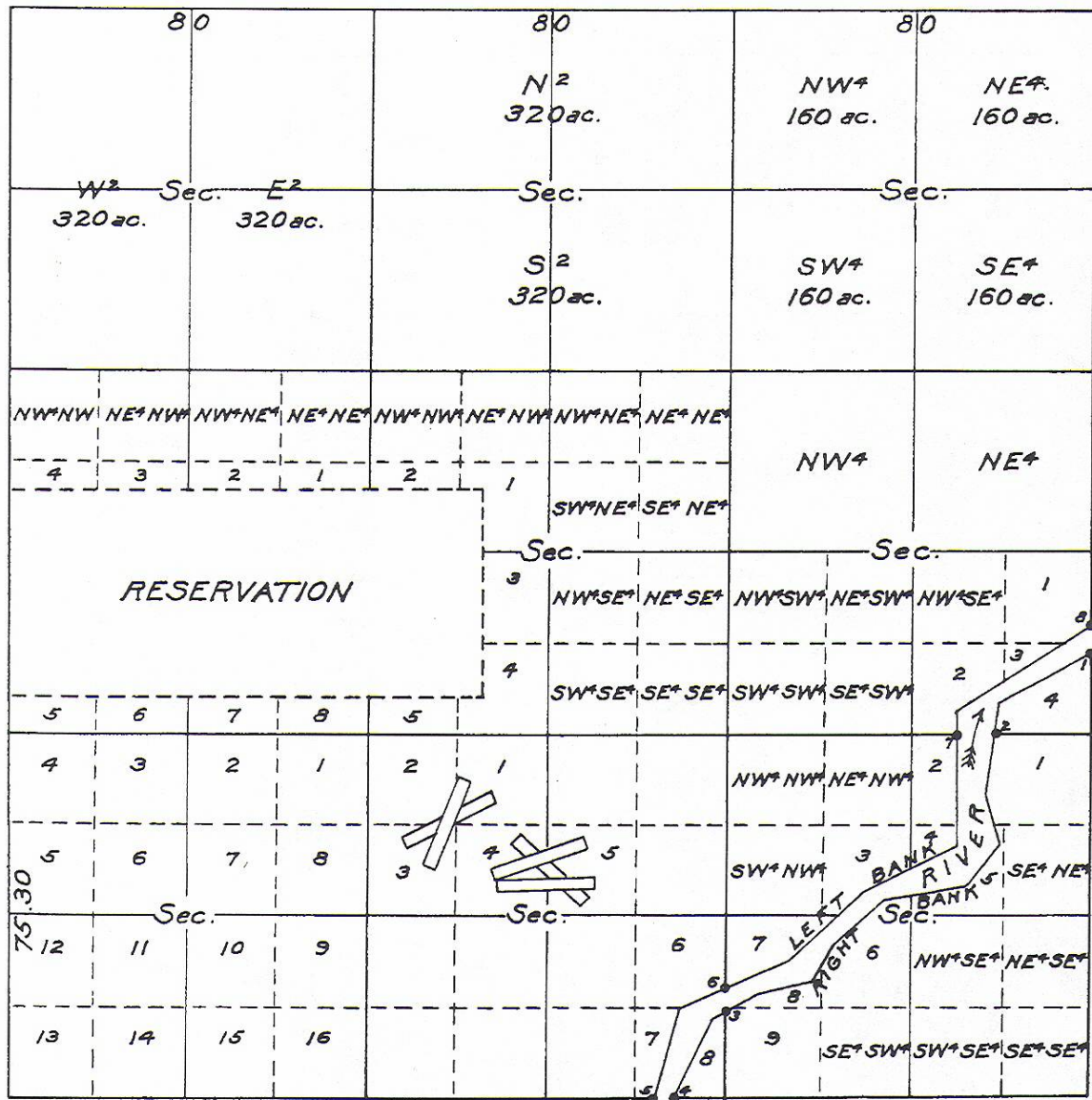


J. V. S.

# SECTION DIAGRAM SHOWING SMALL SUBDIVISIONS



PART OF TOWNSHIP  
SHOWING  
LEGAL SUBDIVISIONS AND LOTTINGS



L.Y.S.



## UNITS OF MEASURE

### UNITS OF LINEAR MEASURE

1 Mile	equals	5280	feet
1 "	"	80	chains
1 Chain	"	100	links
1 "	"	66	feet
1 Link	"	7.92	inches
1 Rod, Pole or Perch	equals	16½	feet

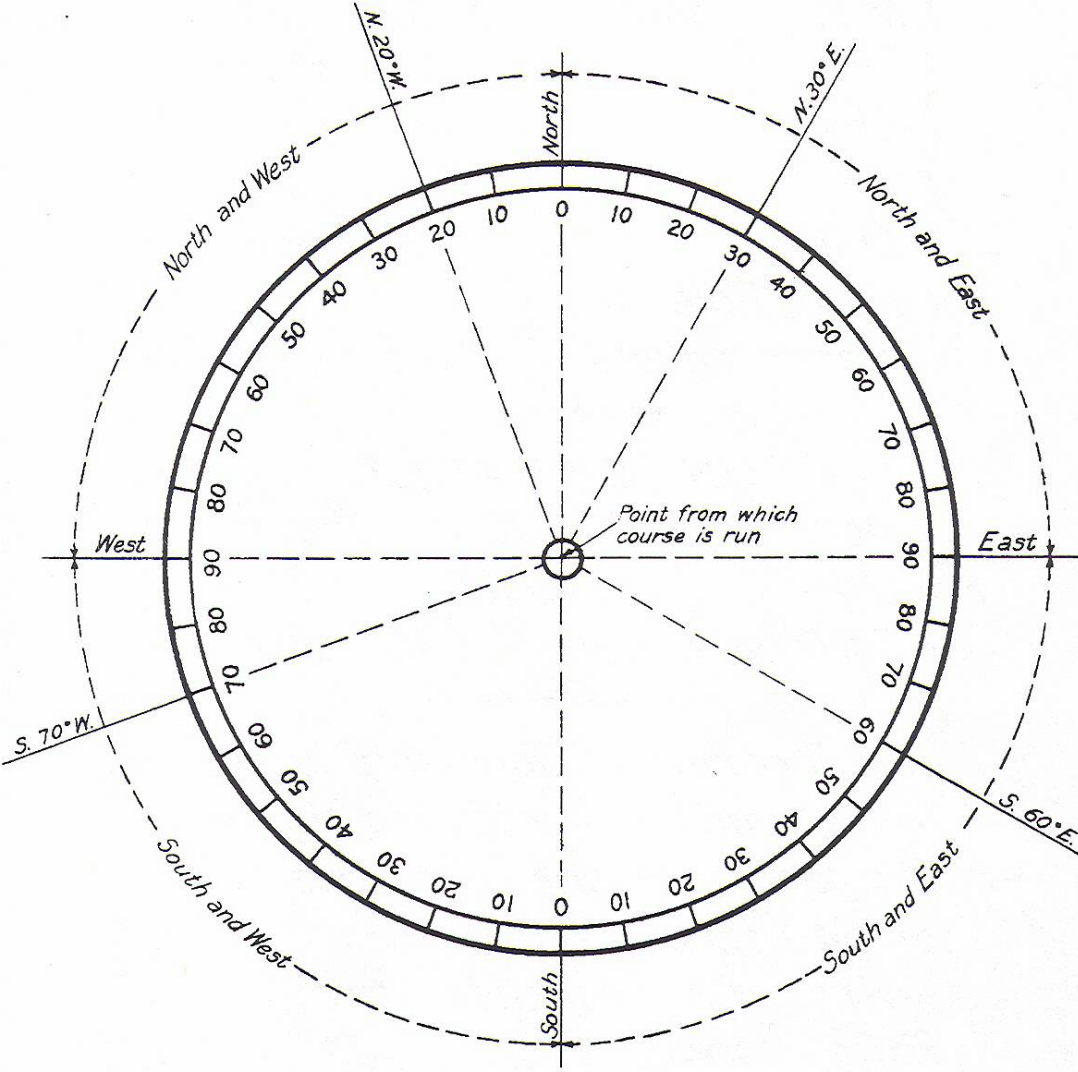
### UNITS OF AREA

1 Acre	equals	10	sq. chains
1 "	"	43560	feet
1 Sq. Mile	equals	640	acres

A theoretical Township is six miles square, containing thirty six sections, one mile square, of 640 acres each.

Area of a theoretical township  
23040 acres.

**DIAGRAM  
SHOWING  
USE OF PROTRACTOR**



J.J.B.



*FOR CAREFUL CONSIDERATION AND OBSERVANCE.*

*The following must be observed in examining the records in the Drafting Division.*

*First, examine the card index for township plats and diagrams, so that you may be sure that the plat necessary for your case is in the files; it is possible that the plat desired has been withdrawn.*

*In withdrawing a plat or plat book, leave a receipt card for same, giving the township and range number or the number of volume, the number of your room, the date withdrawn, and sign your name.*

*Plats must not be retained for a longer period than is absolutely necessary for their use.*

*In returning plats to the files, it is absolutely necessary that the same be returned to their proper place—loose plats are filed in order, first by range number and then by township number.*

*Use the greatest care in handling of records—do not fold the plats; in many cases it would be impossible to restore or replace a plat if damaged, destroyed, or lost.*

*Do not make any notations on face of plat.*

*William Spry*

*Commissioner.*

*I.V.S.*

8

*(WILLIAM SPRY COMMISSIONED 03/22/1921)*